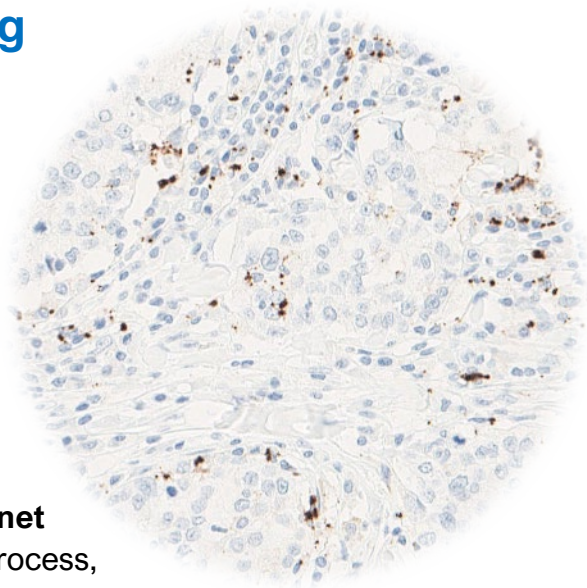


Interpretation of PD-L1 staining in Triple Negative Breast Cancer. An educational Module

The third round of this Module is now open.

The module is intended to help you to quality assure your ability to correctly interpret and quantify PD-L1 staining in the clinical setting of triple negative breast cancer (TNBC).



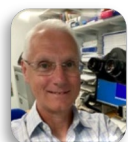
Web-based interface

The module is hosted on the **PathoGate.net** platform. After completing a simple registration process, you will have full access to the educational content.

The Assessment Exercise comprises five cases. Upon completion of the exercise, you will receive feedback in the form of a detailed report, and a certificate of participation will be issued. You can read more about the module and registering by clicking the link at the foot of this page.

Module Leads: Professor Abeer Shaaban and Professor Roger Hunt

Professors Shaaban and Hunt are both highly experienced consultant histopathologists specialising in breast pathology, in the clinical diagnostic and research settings.



Professor Hunt has worked at Wythenshawe Hospital, Manchester since 2011. His special interests centre around the use of immunohistochemistry as a tool for prognostic and precision medicine. He is a founding member of the UK NEQAS for ICC & ISH Scientific Advisory Board.



Professor Shaaban works at the Queen Elizabeth Hospital Birmingham. Abeer has served on the NCRI Breast CSG and chaired its Translational Research subgroup and has published widely on the topic of breast cancer pathology and research into it.

Abeer and Roger support numerous ongoing clinical research projects and multi-professional medical education initiatives.

Cases have been selected from ‘real-life’ clinical caseloads.

For more information and to register: [Click here](#)

Any questions should be forwarded to: support@pathogate.net.

Please feel free to forward this flyer to colleagues who might also be interested.